



# Installation Guide for Version 6 Products

Property Management Solutions for Over 30 Years

## Overview

This guide covers how to install Promas for Associations Version 6 and the Professional Landlord® Version 6 on a Windows workstation for the first time or to install an update to the software on a workstation that already has the software installed.

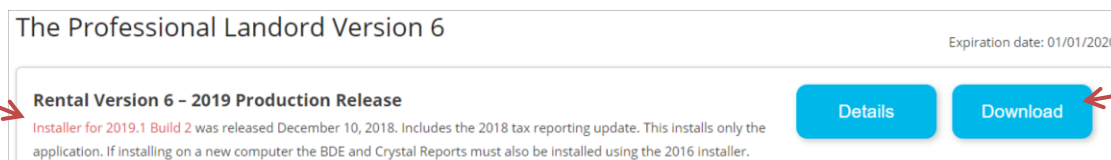
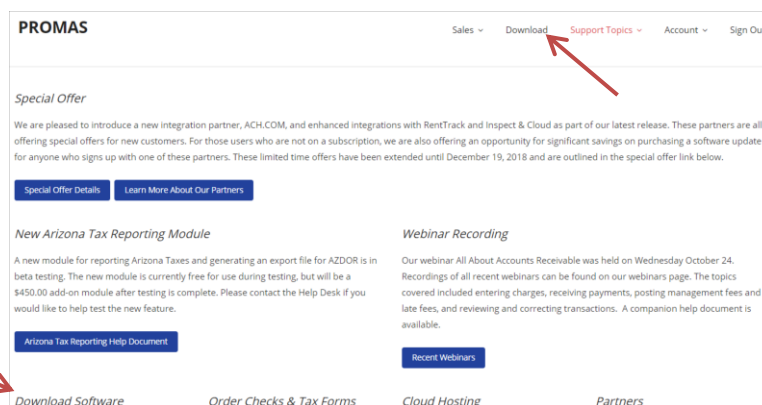
## Related Guides

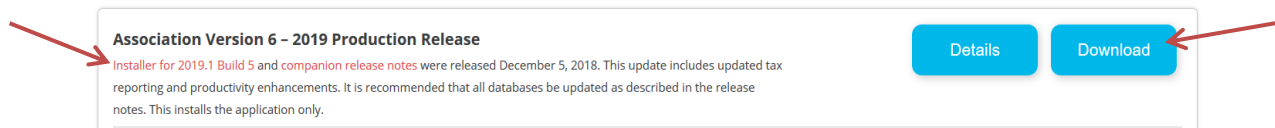
Please refer to the [Network Setup Guide for Version 6](#) if this is the first time you are installing the application on the network. Please refer to the [Network Troubleshooting Guide for Version 6](#) if connection problems exist. If you are considering purchasing a new computer, we recommend reviewing the [Hardware Recommendations for Version 12](#).

For customers using The Professional Landlord®, we strongly recommend that Version 6 users convert to Version 12. Please review the [Benefits of Converting to Version 12](#) and [Hardware Recommendations for Version 12](#) for more information.

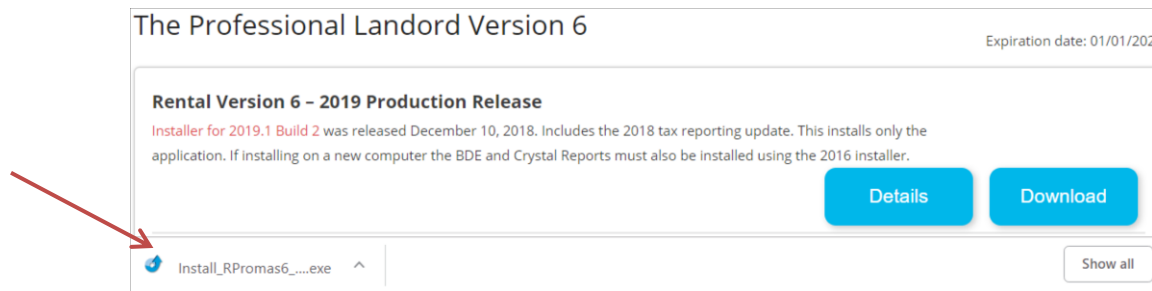
## How to Download and Run Version 6 Installers

- [Download the installer](#) for the most recent release of the software from our [support website](#).

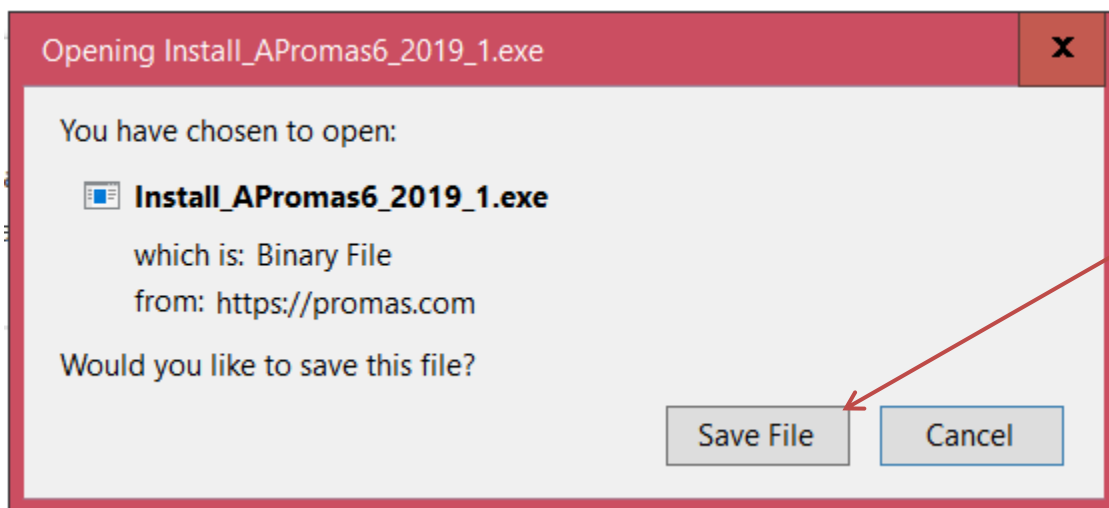




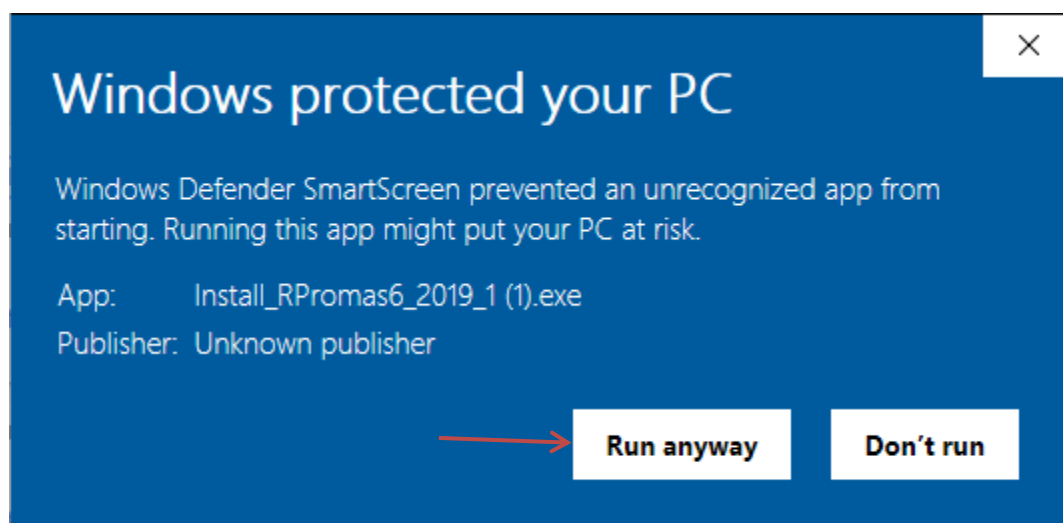
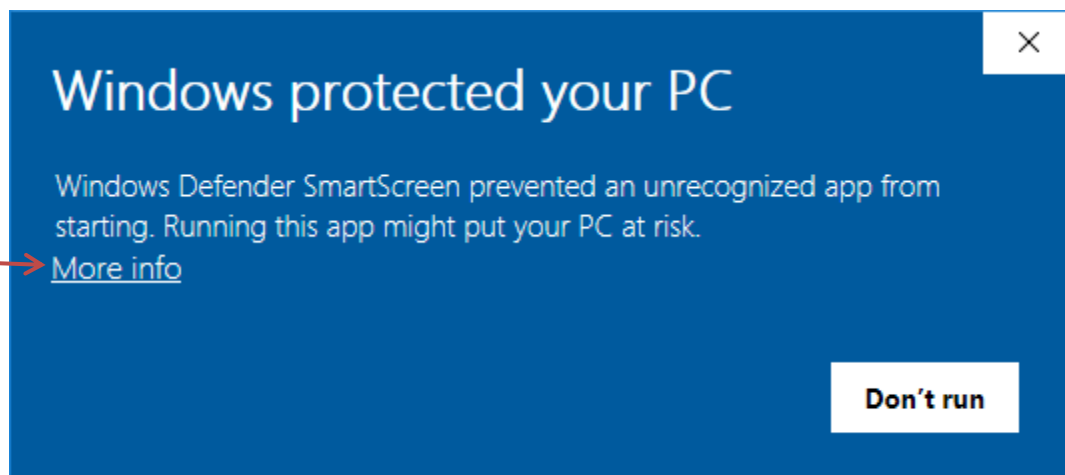
- Make sure that all users are logged out of the software.
- Run the installer on each computer on the network. This installs the latest version of the software.



This is browser specific. It could also be a prompt:



Windows protected your PC may appear. To continue, first click More info and then click Run anyway.



## How to Install Version 6 Software on an Existing Computer

- Follow the instructions above on How to Download and Run Version 6 Installers.
- Confirm that you can open a database in the newly installed application. If you have any connection issues after the installation, please refer to the [Application Configuration](#) section and if needed the [Database Configuration](#) section of this guide. It is possible that the installation may have changed the shortcut properties for the application and these properties can change the location where Windows stores configuration information.
- If you do not intend to maintain an active subscription, please copy the installer to a safe location so it can be used if new computers are purchased.

## Install the Version 6 Software on a New Computer

- [Download the installer](#) for the 2016 Production Release plus BDE and Crystal Reports Installer from our [support website](#) and also download the software for the latest release of the software. There are Rental and Association Version 6 products available.



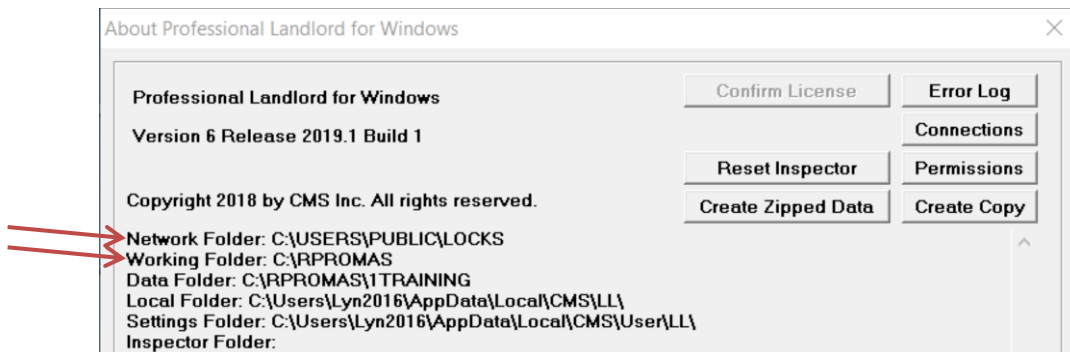
- Make sure all users are logged out of the software.
- Run the installer for the 2016 Production Release Plus BDE & Crystal reports on each computer on the network. This installs the database engine and the report engine on the computer and these only need to be installed once. Next, run the installer for the latest version of the software on each computer. See the section above on How to Download and Install Version 6 Installers for more information on trusting the installers to run with security software.



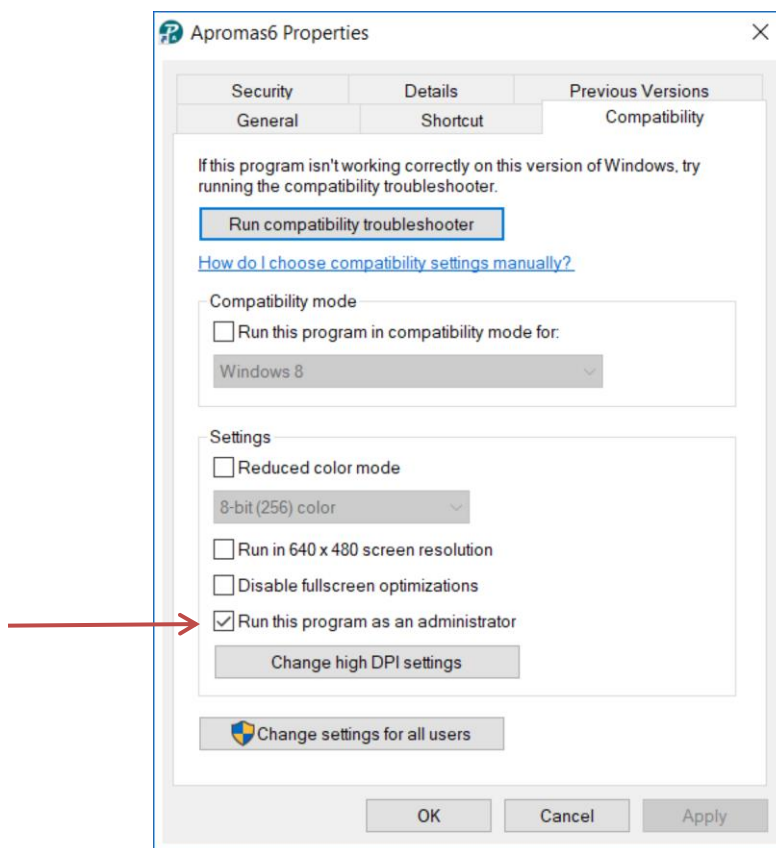
- [Configure the database engine](#) and [configure the application](#) for use on your network. The steps are described in the Application Configuration and Database Configuration sections of this guide.
- If you do not intend to maintain an active subscription, copy the installer to a safe location so it can be used if new computers are purchased.

## Configure the Application

- Log on to the software from a computer that has already been configured.
- From the file menu, select Help>About. Make note of the network folder and working folder locations.



- On the new computer, locate the desktop shortcut used to run the application.
- Right click the shortcut and select "Properties". On the compatibility tab select "Run this Program as Administrator".

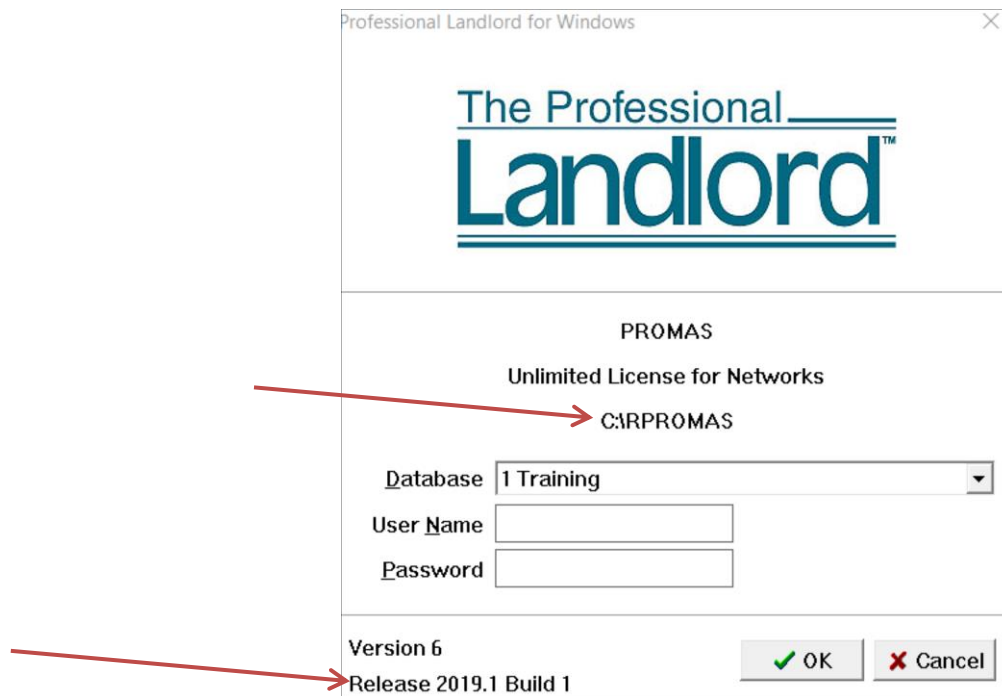


- Click Apply and OK to save the change.

- The icon should show a shield indicating it will run as an administrator.



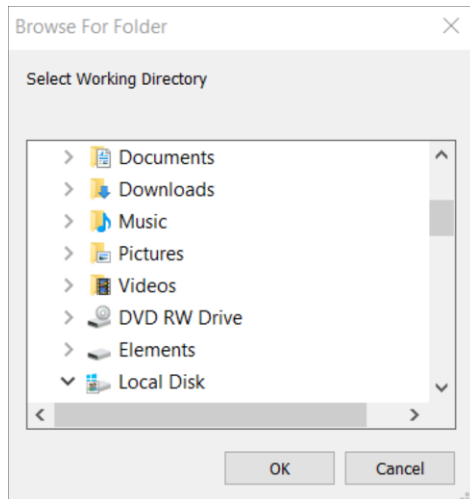
- Run the application by double clicking the shortcut.
- Double click on the working directory. If you are using UNC paths\* (paths that do not start with a drive letter, for example “\\server\share\Apromas”), it is possible the location will not be available from the directory selection dialog. In that case, double click the Release information to open the location of the initialization file (APromas.INI or RPromas.Ini) – usually found in the C:\Users\ComputerName\AppData\Local\CMS\User\PA folder.



*\*UNC - (Universal Naming Convention) A standard for identifying servers, printers and other resources in a network. A UNC path uses double slashes or backslashes to precede the name of the computer. The path (disk and directories) within the computer are separated with a single slash or backslash, as in the following example. Note that in the example, drive letters (c:, d:, etc.) are not used in UNC names.*

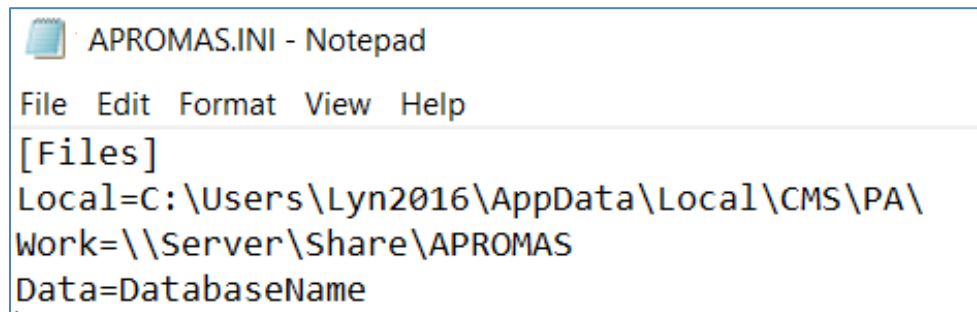
*\\servername\path*

- Change the working directory to match the working folder on the other computers.



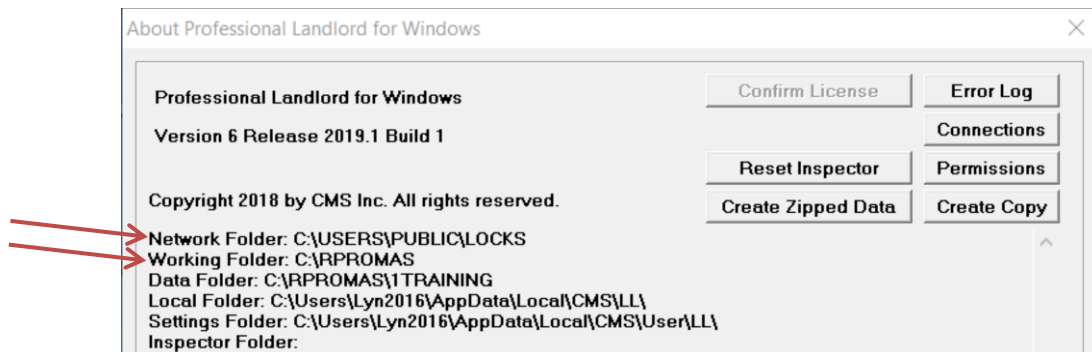
Or

Use Notepad to change the location of the working folder in the INI file. It is the entry that starts with “Work=”. Cutting and pasting the location from a File Explorer window can ensure that the path is accurate.

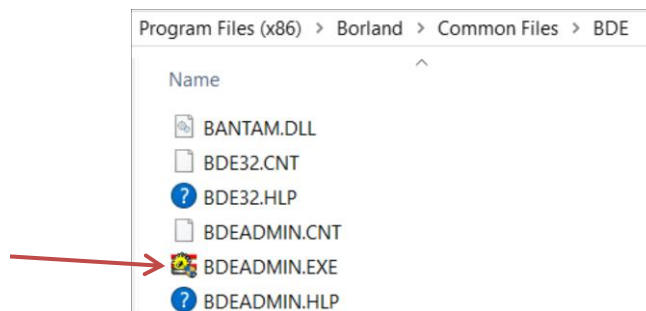


## Configure the Database Engine

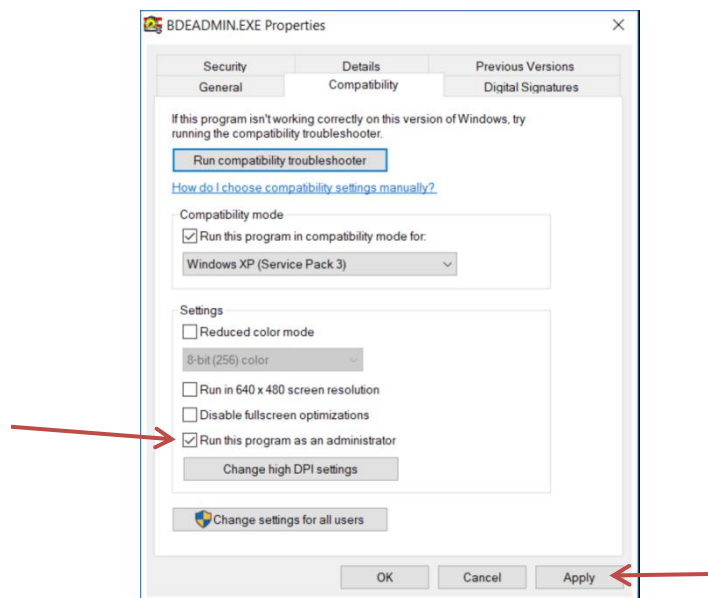
- Log on to the software from a computer that has already been configured.
- From the file menu, select Help>About. Make note of the network folder and working folder locations.



- On the new computer, locate the BDE administrator application. It is usually found in the path c:\Program Files (x86)\Borland\Common Files\BDE.

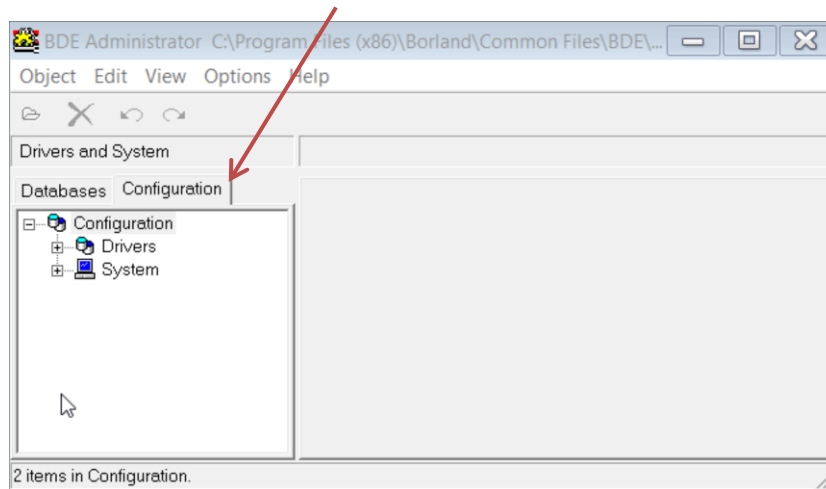


- Right click the BDE Administrator and select “Properties”. On the compatibility tab select “Run this Program as Administrator”.
- Click Apply and OK.

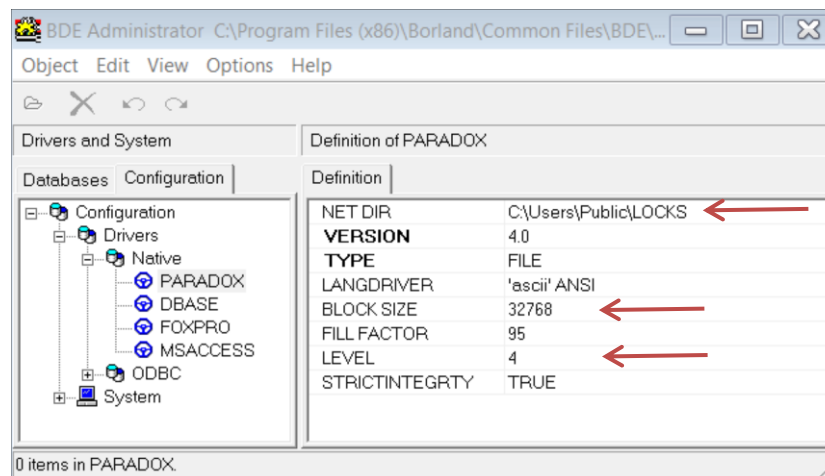




- Run the BDE Administrator by double clicking the icon for BDEAdmin.exe.
- Click on the configuration tab.

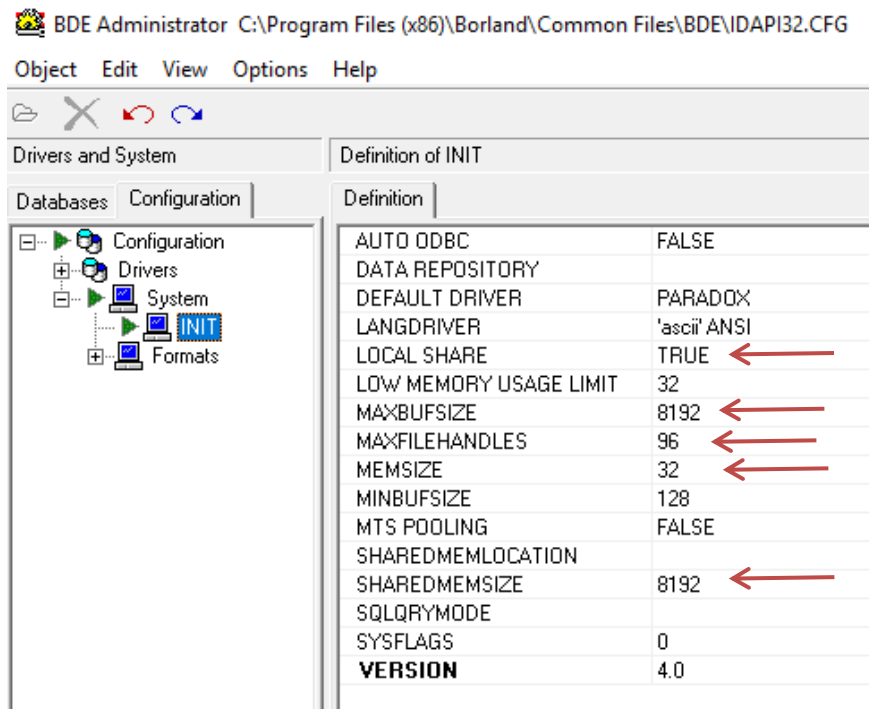


- Open the Drivers settings by clicking the “+” sign next to “Drivers”.
- Open the Native settings by clicking the “+” sign next to “Native”.
- Open the Paradox settings by clicking the circle next to “Paradox”.
- Enter the same network directory path used by the other workstations in the NET DIR setting. The path name should look similar to this path: “\\server\share\locks” or this path: “P:\locks”.
- We recommend changing the other settings to match the settings shown below.



- Open the System settings by clicking the “+” sign next to “System”.
- Open the Init settings by clicking the “+” sign next to “Init”.

- Change the Local Share setting to “True”.
- We recommend changing the other settings to match the settings shown below.



- Click the “X” in the upper right corner of the application window to close the BDE administrator.
- Click on “Yes” to save the changes and click Ok to any remaining prompts.
- You are then ready to launch the program.